

Studies on “Life-Energy” by means of a Quantitative Dowsing Method:**IV****Remote imprinting of frequency information onto ormus atoms during their passage into magnesium phosphate. Possible application for distant healing.**

Roger Taylor PhD¹

Abstract

Making use of a previous finding that “ormus” atoms (see below) from Dead Sea salt solution would pass rapidly into magnesium phosphate crystals, and then gain greatly in dowsable energy, these experiments tested a prediction that information from the local environment could be imprinted during this process. Remote imprinting was done, as previously reported, by means of quantum entanglement between a pair of identical images on paper, and the imprinted frequencies were dowsed blind by a published method. The possible application is suggested of this kind of method for distant healing.

Ormus is a general term now often applied to the Orbitaly Rearranged Monoatomic Elemental forms (“ORMEs”) of a number of metals. The following have been identified as having ormus forms: gold, silver, copper, cobalt and nickel, platinum, palladium, rhodium, iridium, ruthenium, and osmium. They are widely-distributed, and found in most soils (especially volcanic) all natural waters (especially sea waters) and all living organisms. When in the ormus, “high-spin” or “m-state”, some of the atom's electrons are thought to be present as Cooper pairs. This renders the element non-metallic, and unable to engage in chemical reactions. It also acquires some extraordinary properties, including superconductivity (shown by magnetic levitation) and Josephson tunneling. There is much evidence for biological effects of ormus supplements, including improved health of humans and animals, and increases (often astounding) in plant growth. For further information on ormus see Barry Carter's extensive web-site (1).

The vague term “subtle energy” or “life-energy”, can now be more scientifically defined. Whereas the usual concept of energy is associated with increase in entropy, and thus disorder, subtle- or life-energy is associated with order. Within living organisms it can account for the departure of their thermodynamics from the randomness of most non-living matter. It has been given the apt term “syntropy”, as the complement of entropy, by Luigi Fantappie (see article by Di Corpo and Vannini (2)). The molecules which constitute an organism can only take up and maintain such extraordinary organisation by virtue of large-scale quantum coherence (3,4). However, besides living organisms, any centre of large-scale quantum coherence, including geometric sources such as

¹ rogerbt@onetel.com

pyramids, and technological sources such as lasers, can exert a syntropic influence. This can easily be shown by their ability to induce into water both a dowsable charge and increased absorption in the UV (5).

Such quantum coherence, may take up a great variety (probably infinite) of patterns. These can encode information of significance to the particular organism, including its bodily form and the intricacies of its biochemical function. Informational patterns can also be used for healing, whether delivered in subtle form from a human healer, or in the form of electrical or sound vibrational frequencies.

All the evidence from research in healing and psychokinesis goes to show that most operators (other than the most accomplished healers, shamans and chi gung masters) are only able to maintain effective intention for short periods at a time. And even vibrational frequencies can only be applied during limited therapy sessions. Thus it would be very useful to be able to encode such information into a device which could present it to the patient (or “healee”) on a more continuous basis.

This Part IV extends work reported in Part I, in which it was shown that the life-energy or syntropic field could be dowsed quantitatively (5), and in Part II which established the high affinity of magnesium phosphate (MP) for ormus (6), and in Part III which established non-local transmission of such energy by quantum entanglement between pairs of identical images on paper (7). Here it is shown that specific information can also be transmitted non-locally. Thus specific frequency-information transmitted non-locally by images on paper was shown to become stably imprinted onto ormus atoms during their passage into MP.

Methods

As described in Part II, I had found, by dowsing, that the ormus atoms, known to be present in relatively large quantity in Dead Sea salt (DSS) (1), would migrate rapidly from a solution of the salt into these MP crystals. These then acquired a remarkably strong dowsable activity which was not present in the solution, or only very weakly in the original salt crystals. It is presumed that the ormus atoms arrange themselves in the crystal matrix (of MP, but obviously not NaCl) in such a way as to favour enhanced quantum coherence – a Bose-Einstein condensation.

Combining ormus/MP and orgonite

For a more powerful energy, e.g. for healing (see discussion) these crystals can be put into a hole in a piece of orgonite (described in Part II) but for which my favoured method now is to use carnauba wax, or a mixture of this with beeswax, since this was sensed by a healer as being more healthy than the toxic resin. In this case a plastic vial (~25ml), is used as mould. It is first packed tightly with steel wool (this packs better if first cut small with scissors) and then filled with the resin or wax mixture. Once the mix has hardened, a central hole (~6mm) is drilled, filled with the crystals, and sealed with more resin or wax. In this way one makes an easily-handled object which, moreover, is considerably more active than either the crystals alone, or the orgonite alone, or the sum of both. As described in Part II, such ormus-activated orgonites function very well to charge water with subtle energy.

Experiments and results

Frequency imprinting

For this purpose I have used a small Rife instrument (8). The leads, which would normally be connected to sticky skin-contact pads, were connected to two zinc plates. (aluminium was avoided because it blocks the passage of the subtle energy field). For non-local transmission a flat piece of orgonite, made with steel wool and resin as above, was placed between these plates, and the whole surrounded by the printed image, face inwards (Fig. 1). This image was chosen as the one, out of several tested, which performed best in dowsing tests for non-local entanglement (7).



Fig. 1. Set-up for sending frequencies non-locally: flat piece of orgonite between two metal plates (to which frequencies are applied) surrounded by printed copy of the chosen image.

At maximum setting the Rife instrument puts out about 36V, making an electrostatic field of about 12V/cm. At the remote site, ~2-300mg of magnesium phosphate (MP) crystals were placed in a flask, surrounded by another copy of the pattern (Fig. 2). After switching on the output, about 40-60ml 50% DSS was added to the flask. To ensure that all frequencies get a chance to be taken up (since the uptake of ormus is so rapid) the Rife was set to cycle repeatedly through all the selected frequencies, allowing only 5sec for each. Although sine waves were used for this test, for therapeutic use square waves, with the very sharp rise time of which this machine is capable, are likely to be more effective.



Fig.2. Receiving set-up: another printed copy of same image as in Fig. 1 surrounds flask containing 50% DSS, and 2-300mg solid MP.

Three samples were prepared, with either five, or one, or no frequencies applied. After 15-30min imprinting, the MP crystals were collected on filter paper, washed and dried, enclosed in polythene sachets, and mailed to Cyril Smith. He has developed an accurate and reproducible method for dowsing frequencies (9). Results from the 5-frequency sample, dowsed blind, showed a remarkable correspondence (Fig 3).

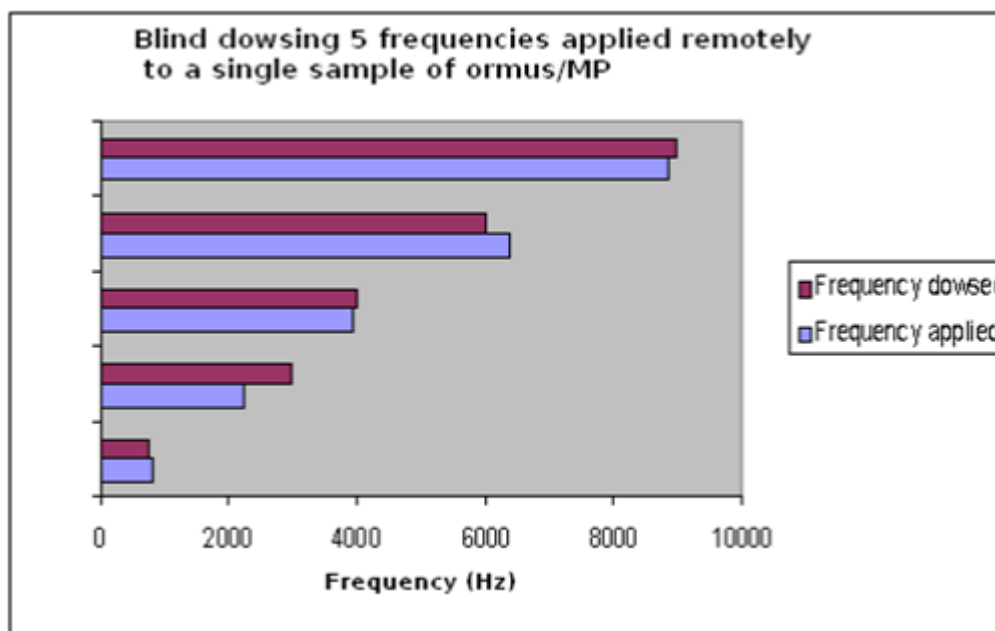


Fig. 3. Results of blind-dowsing a sample of ormus/MP to which five frequencies had been imprinted by the above-described method.

Discussion

Given that the method involving images on paper works, so as to effectively transmit the dowsable effect of organite (7), it is not surprising that information can also be transmitted in the same way. More important, however, is the potential for healing which this result seems to offer, since it could enable the storage of healing intention. As previously mentioned, a healer can usually maintain intention only for short periods. With this method, however, the healer could focus intention on the patient (or “healee”) while the DSS is poured onto the MP crystals, and would only need to maintain healing intention for a few minutes. The presence of the healee is not essential, since a surprising amount of information, including body field frequencies is contained in the scattered light from a photograph (10). Once the crystals have been imprinted, they would be incorporated into a piece of organite. This could be sent to the healee, who would use it to charge all drinking water. Alternatively, the organite containing ormus/MP could be used in a more conventional radionic mode by placing it on the healee's photo or other witness, like a piece of hair (Fig. 4).

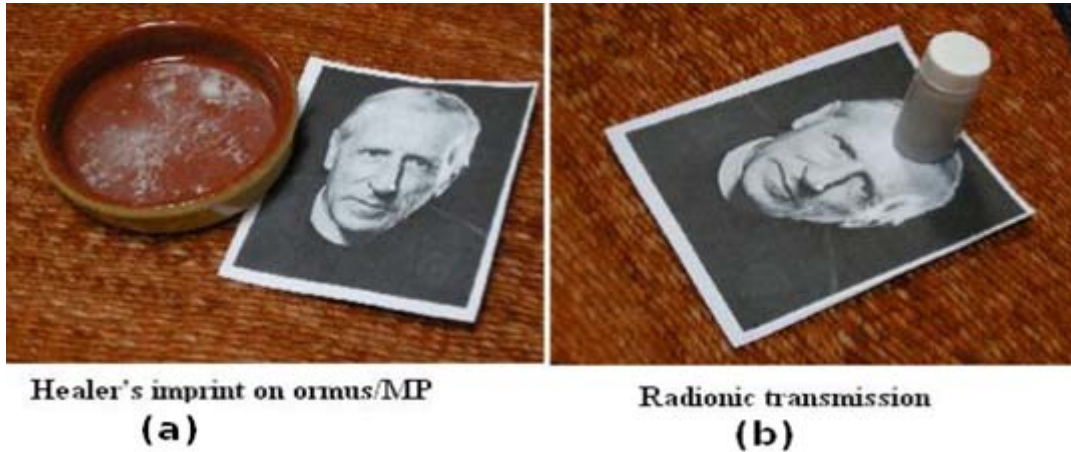


Fig. 4. (a) Dish contains 50% DSS, to which the healer adds solid MP while focussing healing intention on the healee's photograph. (b) The ormus/MP, imprinted with the healer's influence, has been inserted into a central hole in a piece of organite in the plastic vial. Placed on the healee's photo this has the potential to exert healing remotely.

In this way one might enable a single short healing session to exert a continuous effect for an indefinite period. Such an idea has of course long been used in radionics. According to Karl Welz, from whose web-site Fig. 5 is copied (11), any healing or radionics requires the syntropic field of the operator, but the role of organite is to greatly enhance this field.



Fig. 5. Rationale for his radionic method by Karl Welz (11). “Target” could be a human patient, and “Trend” would normally be healing. Emphasizes the need for life-energy, or syntropic field - as supplied either by the healer, or by the organite within his device.

But the method described here could provide a more scientifically-acceptable rationale, and may well be more effective. A particular feature is the option of sending specific frequencies, indicating that it could readily be adapted to send homeopathic information – e.g. using one of the computerised electrodermal methods, which have such information digitally encoded on the computer hard-disk. .

References

1. www.subtleenergies.com/ormus.
2. Di Corpo, U. and Vannini, A. Syntropy 2012 (1): 90-103
3. Ho, Mae-Wan. The Rainbow and the Worm, 3rd Ed. 2008.
4. Swanson, Claude. Life Force: the Scientific Basis. 2010. Poseida Press, Tucson AZ.
5. Taylor, Roger. Studies on "Life-Energy" by means of a Quantitative Dowsing Method. I. Comparison of orgonite with the orgone accumulator; spectrophotometric confirmation of its effect on water; nature of orgone. Syntropy 2012 (2): 17-32.
6. Taylor Roger. Studies on "Life Energy" by means of a Quantitative Dowsing Method. II. Studies with Ormus. Syntropy 2013 (1): 60-68
7. Taylor, Roger. Studies on "Life-Energy" by means of a Quantitative Dowsing Method: III. Remote transmission of life energy by means of macroscopic quantum entanglement. Syntropy (in press).
8. <http://www.pulsedtechnologies.com/>
9. Smith, CW. (1994) Electromagnetic and Magnetic Vector Potential Bio-Information and Water. In: Endler PC, Schulte J (Eds.). Ultra High Dilution: Physiology and Physics. Dordrecht: Kluwer Academic, 187-202.
10. **Smith CW (2010) Reflected Light Modulated by Biofields.** The Journal of Alternative and Complementary Medicine November 2010, Vol. 16, No. 11: 1133-1134.
11. <http://www.hscti.com>

Acknowledgements

Special thanks must go to Cyril Smith, whose work in dowsing the frequencies was crucial to this work. And, although it does not form part of the experimental work (because the results were not proven) I want to thank Jill Cook for her healing skills during the application, in three instances, of the method suggested above for storing healing intention in ormus/MP.

Addendum

I have been noticing that, during a long imprinting process, the quantity of solid MP was decreasing. It then occurred to me that, at such a high concentration of DSS, the sodium might be competing with and replacing magnesium, so making the crystals soluble. So now I am using the precipitate from DSS (my usual preparation) re-dissolved with HCl. This gets rid of most of the sodium. But it did raise another problem: as many ormus researchers have reported for ormus solutions in water, the re-dissolved precipitate began to lose activity over a number of days. Presumably this occurs by quantum tunnelling out of the jar, when the solid magnesium hydroxide which holds onto the ormus in the precipitate, is no longer present. Thus such solutions should be used freshly after re-dissolution. For a long period of imprinting, e.g. at a sacred site, or during a ceremony or ritual, it may be more suitable to make use of quantum tunnelling in the following manner: simply put a tube of MP into 50 % DSS, as described in Part II. The ormus takes about 7 hours to be completely taken up into MP(6) having now to tunnel through the glass wall of the tube.